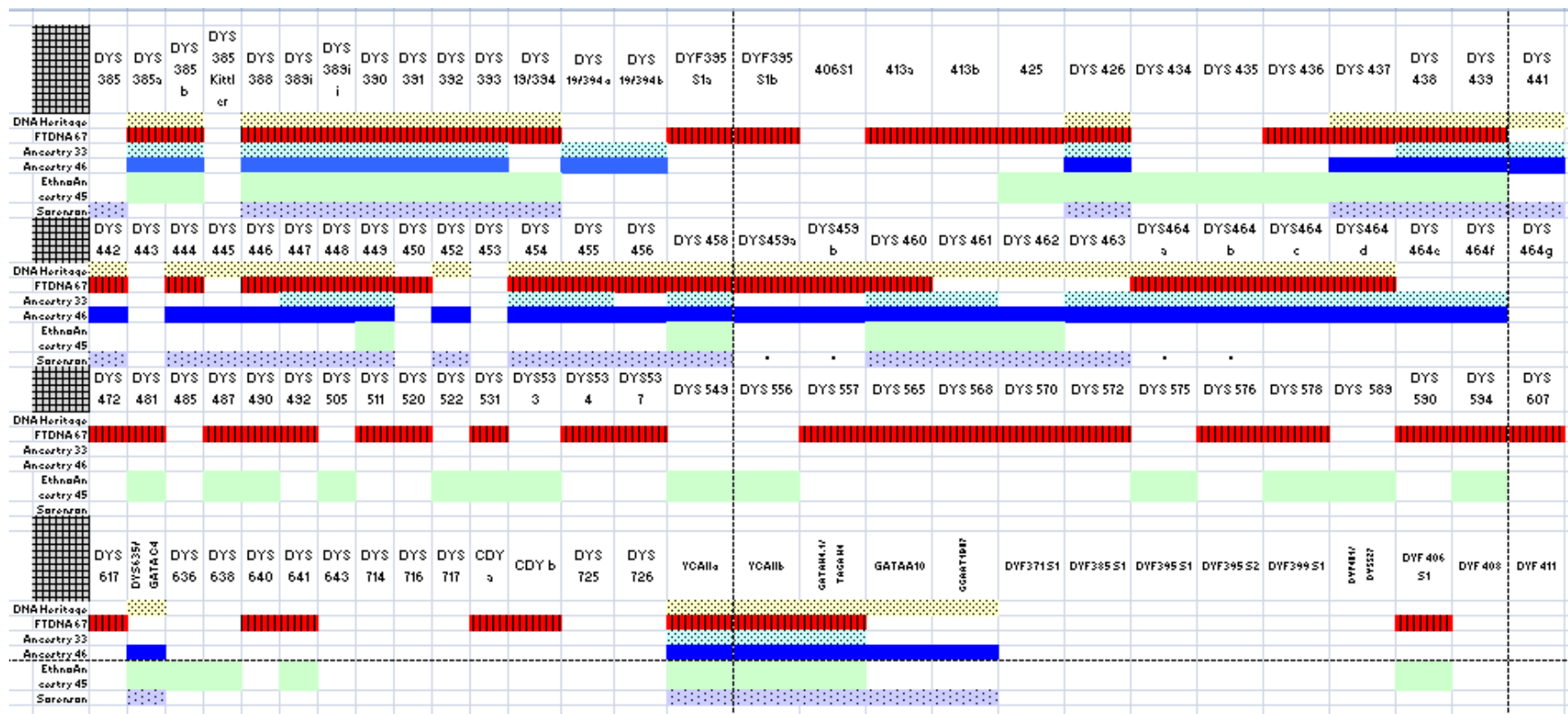


Compare - All

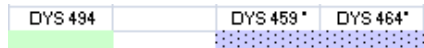
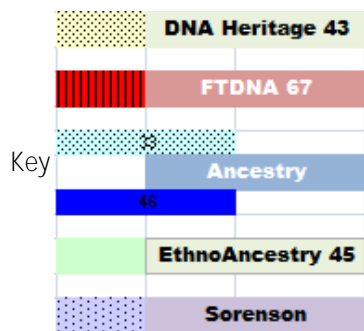
Friday, August 22, 2008
10:52 AM

Here I have put the marker locations available through 5 selected y-chromosome tests for men of one of our surname variations.



EthnoAncestry alone
Tests 494

Above chart serves as base spreadsheet for the comparisons that follow.



Sorenson tests 459 & 464 as 1 unit, instead of splitting them into a&b.

Relevant Markers for Each Spelling in Project:

- TE / TI spelling - DYS 439, 442, 458
- DI spelling - DYS 462
- DE spelling - DYS 391, 441, 635

St*r**v*nt Genetic Project

Home:
<http://www.sturgood.com/dna/blog/>
Contact:
dna_info@sturgood.com

Above marker locations have shown variations in our results so far.

[Current Results](#)

Compare - DNAH & Sorenson

Friday, August 22, 2008
8:45 AM

For all intents and purposes for this project, the two are identical.

We can determine relatedness to the 4 major spellings of our surname with either of these tests.

Sorenson only gives 1 value for DYS 385, while DNAH splits them into a, b values. In which case a match would occur when $a + b = \text{Sorenson value}$.

	DYS 385	DYS 385a	DYS 385b	DYS 385 Kitter	DYS 388	DYS 383i	DYS 383i i	DYS 390	DYS 391	DYS 392	DYS 393	DYS 19/394	DYS 19/394a	DYS 19/394b	DYF395 S1a	DYF395 S1b	406S1	413a	413b	425	DYS 426	DYS 434	DYS 435	DYS 436	DYS 437	DYS 438	DYS 439	DYS 441
DNA Heritage																												
Sorenson																												
	DYS 442	DYS 443	DYS 444	DYS 445	DYS 446	DYS 447	DYS 448	DYS 449	DYS 450	DYS 452	DYS 453	DYS 454	DYS 455	DYS 456	DYS 458	DYS 459a	DYS 459b	DYS 460	DYS 461	DYS 462	DYS 463	DYS 464a	DYS 464b	DYS 464c	DYS 464d	DYS 464e	DYS 464f	DYS 464g
DNA Heritage																												
Sorenson																												
	DYS 472	DYS 481	DYS 485	DYS 487	DYS 490	DYS 492	DYS 505	DYS 511	DYS 520	DYS 522	DYS 531	DYS 533 3	DYS 533 4	DYS 533 7	DYS 549	DYS 556	DYS 557	DYS 565	DYS 568	DYS 570	DYS 572	DYS 575	DYS 576	DYS 578	DYS 589	DYS 590	DYS 594	DYS 607
DNA Heritage																												
Sorenson																												
	DYS 617	DYS 637 GATA C4	DYS 636	DYS 638	DYS 640	DYS 641	DYS 643	DYS 714	DYS 716	DYS 717	CDY a	CDY b	DYS 725	DYS 726	YCAIIa	YCAIIb	GATAH4/ TAGAII	GATAA10	GGAT19b	DYF371S1	DYF385S1	DYF395S1	DYF395S2	DYF399S1	DYF417/ DYF227	DYF 406 S1	DYF 408	DYF 411
DNA Heritage																												
Sorenson																												

Again, Sorenson only reports one value for these two DYS locations. In which case, you would compare totals.

We are comparing DNA Heritage tests with the others because, our [Results](#) as of July 2008 are all through DNA Heritage's 43 Marker test.

Compare DNAH & Ancestry.com

Friday, August 22, 2008
9:54 AM

For all intents and purposes in the project, identical Ancestry reports e, and f values for 464, and an a,b value for 394. Value of these additions can be debated. The 33 marker Ancestry test only covers 4 of the 7 markers that have so far shown variation in the project. They are listed on page 1.

	DYS 385	DYS 385a	DYS 385b	DYS 385 KitHer	DYS 388	DYS 389i	DYS 389i	DYS 390	DYS 391	DYS 392	DYS 393	DYS 19/394	DYS 19/394a	DYS 19/394b	DYF395 S1a	DYF395 S1b	406S1	413a	413b	425	DYS 426	DYS 434	DYS 435	DYS 436	DYS 437	DYS 438	DYS 439	DYS 441		
DNA Heritage																														
Ancestry 33																														
Ancestry 46																														
	DYS 442	DYS 443	DYS 444	DYS 445	DYS 446	DYS 447	DYS 448	DYS 449	DYS 450	DYS 452	DYS 453	DYS 454	DYS 455	DYS 456	DYS 458	DYS459a	DYS459b	DYS 460	DYS 461	DYS 462	DYS 463	DYS464 a	DYS464 b	DYS464 c	DYS464 d	DYS 464e	DYS 464f	DYS 464g		
DNA Heritage																														
Ancestry 33																														
Ancestry 46																														
	DYS 472	DYS 481	DYS 485	DYS 487	DYS 490	DYS 492	DYS 505	DYS 511	DYS 520	DYS 522	DYS 531	DYS53 3	DYS53 4	DYS53 7	DYS 543	DYS 556	DYS 557	DYS 565	DYS 568	DYS 570	DYS 572	DYS 575	DYS 576	DYS 578	DYS 583	DYS 590	DYS 594	DYS 607		
DNA Heritage																														
Ancestry 33																														
Ancestry 46																														
	DYS 617	DYS635/ GATA C4	DYS 636	DYS 638	DYS 640	DYS 641	DYS 643	DYS 714	DYS 716	DYS 717	CDY a	CDY b	DYS 725	DYS 726	YCAIIa	YCAIIb	GATHMLY TNGRHE	GATAA10	GGART10B7	DYF371S1	DYF385 S1	DYF395 S1	DYF395 S2	DYF399 S1	DYF401/ DYF517	DYF 406 S1	DYF 408	DYF 411		
DNA Heritage																														
Ancestry 33																														
Ancestry 46																														

In August 2008, the introductory price for members was nearly half the cost of DNA Heritage's service, for mostly the same marker locations. When that half price sale for members ends, the 46 marker test will cost \$10 more than DNA Heritage's \$189. The 33 marker Ancestry test will be cheaper at \$149.

Compare DNAH & EthnoAncestry

Friday, August 22, 2008
10:09 AM

Nice combination of markers. Only 23 overlap, but expensive, around \$500

	DYS 385	DYS 385a	DYS 385b	DYS 385	DYS 388	DYS 389i	DYS 389i	DYS 390	DYS 391	DYS 392	DYS 393	DYS 19/394	DYS 19/394a	DYS 19/394b	DYF395 S1a	DYF395 S1b	406S1	413a	413b	425	DYS 426	DYS 434	DYS 435	DYS 436	DYS 437	DYS 438	DYS 439	DYS 441			
DNA Heritage																															
EthnaAn																															
cortry 45																															
	DYS 442	DYS 443	DYS 444	DYS 445	DYS 446	DYS 447	DYS 448	DYS 449	DYS 450	DYS 452	DYS 453	DYS 454	DYS 455	DYS 456	DYS 458	DYS459a	DYS459b	DYS 460	DYS 461	DYS 462	DYS 463	DYS464a	DYS464b	DYS464c	DYS464d	DYS 464e	DYS 464f	DYS 464g			
DNA Heritage																															
EthnaAn																															
cortry 45																															
	DYS 472	DYS 481	DYS 485	DYS 487	DYS 490	DYS 492	DYS 505	DYS 511	DYS 520	DYS 522	DYS 531	DYS5533	DYS5534	DYS5537	DYS 549	DYS 556	DYS 557	DYS 565	DYS 568	DYS 570	DYS 572	DYS 575	DYS 576	DYS 578	DYS 589	DYS 590	DYS 594	DYS 607			
DNA Heritage																															
EthnaAn																															
cortry 45																															
	DYS 617	DYS357	GATA04	DYS 636	DYS 638	DYS 640	DYS 641	DYS 643	DYS 714	DYS 716	DYS 717	CDY a	CDY b	DYS 725	DYS 726	YCAIIa	YCAIIb	GATM4-17	TG081H	GATAA10	GGAT19B	DYF371S1	DYF385S1	DYF395S1	DYF395S2	DYF399S1	DYF461/	DYF522	DYF 406 S1	DYF 408	DYF 411
DNA Heritage																															
EthnaAn																															
cortry 45																															

Compare DNAH & Family Tree DNA

Friday, August 22, 2008
10:15 AM

DNAH provides DYS 441, 445, 452, 490, 492, 505, 635, GATAA10, and IB07, that FTDNA 67 does not test.

	DYS 385	DYS 385a	DYS 385b	DYS 385 Kitler	DYS 388	DYS 389i	DYS 389ii	DYS 390	DYS 391	DYS 392	DYS 393	DYS 19/394	DYS 19/394a	DYS 19/394b	DYF395 S1a	DYF395 S1b	406S1	413a	413b	425	DYS 426	DYS 434	DYS 435	DYS 436	DYS 437	DYS 438	DYS 439	DYS 441	
DNA Heritage																													
FTDNA 67																													
	DYS 442	DYS 443	DYS 444	DYS 445	DYS 446	DYS 447	DYS 448	DYS 449	DYS 450	DYS 452	DYS 453	DYS 454	DYS 455	DYS 456	DYS 458	DYS459a	DYS459b	DYS 460	DYS 461	DYS 462	DYS 463	DYS464 a	DYS464 b	DYS464 c	DYS464 d	DYS 464e	DYS 464f	DYS 464g	
DNA Heritage																													
FTDNA 67																													
	DYS 472	DYS 481	DYS 485	DYS 487	DYS 490	DYS 492	DYS 505	DYS 511	DYS 520	DYS 522	DYS 531	DYS553 3	DYS553 4	DYS553 7	DYS 549	DYS 556	DYS 557	DYS 565	DYS 568	DYS 570	DYS 572	DYS 575	DYS 576	DYS 578	DYS 589	DYS 590	DYS 594	DYS 607	
DNA Heritage																													
FTDNA 67																													
	DYS 617	DYS635/ GATA C4	DYS 636	DYS 638	DYS 640	DYS 641	DYS 643	DYS 714	DYS 716	DYS 717	CDY a	CDY b	DYS 725	DYS 726	YCAIIa	YCAIIb	GATAH4/ TIGH H	GATAA10	GCART18P	DYF371S1	DYF385S1	DYF395S1	DYF395S2	DYF399S1	DYF406/ D2124D	DYF 406 S1	DYF 408	DYF 411	
DNA Heritage																													
FTDNA 67																													

But the 67 marker test by FTDNA is probably the gold standard in genetic genealogy now. However, at \$350 it is quite expensive. It provides 33 markers that DNA Heritage does not. However, those 33 markers are not useful unless they are also tested by the ones you wish to compare to. At present time, because we have 20 results already through DNAH, and DNAH has 9 markers not tested by FTDNA, I recommend starting with DNAH, Ancestry, or Sorenson. They can establish a basic relatedness. Additional tests using FTDNA or EthnoAncestry could be used to establish closer relations.

Compare EthnoAncestry 45 & FTDNA 67

Saturday, August 23, 2008
12:05 PM

Just for kicks lets compare the two expensive tests, \$350 apiece. Between the two of them, approximately 80 unique marker locations are tested.

	DYS 385	DYS 385a	DYS 385b	DYS 385 Kittler	DYS 388	DYS 389i	DYS 389i	DYS 390	DYS 391	DYS 392	DYS 393	DYS 19/394	DYS 19/394a	DYS 19/394b	DYF395 S1a	DYF395 S1b	406S1	413a	413b	425	DYS 426	DYS 434	DYS 435	DYS 436	DYS 437	DYS 438	DYS 439	DYS 441	
FTDNA 67	█	█	█	█	█	█	█	█	█	█	█	█	█	█	█	█	█	█	█	█	█	█	█	█	█	█	█	█	█
EthnoAncestry 45	█	█	█	█	█	█	█	█	█	█	█	█	█	█	█	█	█	█	█	█	█	█	█	█	█	█	█	█	█
	DYS 442	DYS 443	DYS 444	DYS 445	DYS 446	DYS 447	DYS 448	DYS 449	DYS 450	DYS 452	DYS 453	DYS 454	DYS 455	DYS 456	DYS 458	DYS459a	DYS459b	DYS 460	DYS 461	DYS 462	DYS 463	DYS464a	DYS464b	DYS464c	DYS464d	DYS 464e	DYS 464f	DYS 464g	
FTDNA 67	█	█	█	█	█	█	█	█	█	█	█	█	█	█	█	█	█	█	█	█	█	█	█	█	█	█	█	█	
EthnoAncestry 45	█	█	█	█	█	█	█	█	█	█	█	█	█	█	█	█	█	█	█	█	█	█	█	█	█	█	█	█	
	DYS 472	DYS 481	DYS 485	DYS 487	DYS 490	DYS 492	DYS 505	DYS 511	DYS 520	DYS 522	DYS 531	DYS553 3	DYS553 4	DYS553 7	DYS 549	DYS 556	DYS 557	DYS 565	DYS 568	DYS 570	DYS 572	DYS 575	DYS 576	DYS 578	DYS 589	DYS 590	DYS 594	DYS 607	
FTDNA 67	█	█	█	█	█	█	█	█	█	█	█	█	█	█	█	█	█	█	█	█	█	█	█	█	█	█	█	█	
EthnoAncestry 45	█	█	█	█	█	█	█	█	█	█	█	█	█	█	█	█	█	█	█	█	█	█	█	█	█	█	█	█	
	DYS 617	DYS357 GATA C4	DYS 636	DYS 638	DYS 640	DYS 641	DYS 643	DYS 714	DYS 716	DYS 717	CDY a	CDY b	DYS 725	DYS 726	YCAIIa	YCAIIb	GATRAH1/ TAGH1H	GATAA10	GMAT19B7	DYF371S1	DYF385S1	DYF395S1	DYF395S2	DYF399S1	DYF461/ DYF527	DYF 406 S1	DYF 408	DYF 411	
FTDNA 67	█	█	█	█	█	█	█	█	█	█	█	█	█	█	█	█	█	█	█	█	█	█	█	█	█	█	█	█	
EthnoAncestry 45	█	█	█	█	█	█	█	█	█	█	█	█	█	█	█	█	█	█	█	█	█	█	█	█	█	█	█	█	

Notes, Links, Pricing, Sources

Saturday, August 23, 2008
1:10 PM

Things to be aware of with y-chromosome testing

- ∅ The values reported at these marker locations on your y-chromosome mean nothing by themselves.
- ∅ DNA testing is all about comparison and numbers. You must have somebody to compare with and the more marker values that match the closer the relation.
- ∅ You can only compare values for individuals within the same Actual Predicted Haplogroup. (such as R1b or I1a the two major haplogroups represented in our project)
- ∅ ySTR markers are used to test relatedness within population groups.
- ∅ ySNP markers are used to determine those population groups and if your deep ancestry

Pricing

DNA Heritage 43 marker - Project Price \$189 - \$169 ordered by Aug 31, 2008, Paid for by September 30.

FTDNA 67 Marker - \$350

Ancestry 33 - \$75 for members limited time offer

Ancestry 46 - \$100 for members limited time offer

EthnoAncestry 45 - \$350 for first time customers- \$300 returning

Sorenson - Free, but no certificates, no notification, and anonymous

Caveat:

This was a time intensive exercise, mistakes could and probably have been made. Let me know at dna_info@sturgood.com any corrections, complaints, questions, comments.

Links:

[Project Order](#) @ DNA Heritage

[67 Marker Test](#) @ FTDNA

[DNA Testing](#) @ Ancestry.com

[45 Marker Test](#) @ EthnoAncestry.com

[Free Service](#) @ Sorenson

There are many options available. What you see here are not the only options. Please, if you are interested in pursuing Genetic Genealogy, use this document as one source in your quest. Those of you interested in participating in the St*r**v*nt Genetic project to determine relatedness can start with any of these offerings.

This document created in Excel 2007 and OneNote, Published as PDF document, and ©by JS Sturdevant, August 2008

Sources and Credits:

[GenDNA](#) - this is the source of the FTDNA marker information

[Ancestry](#)

[EthnoAncestry](#)

[Sorenson](#)